



The 1200B Series combines all the quality and performance features the industry demands into a single, economical palletizer. It's fast, reliable, modular and flexible. Quite simply, it's the best palletizer value on the market today.

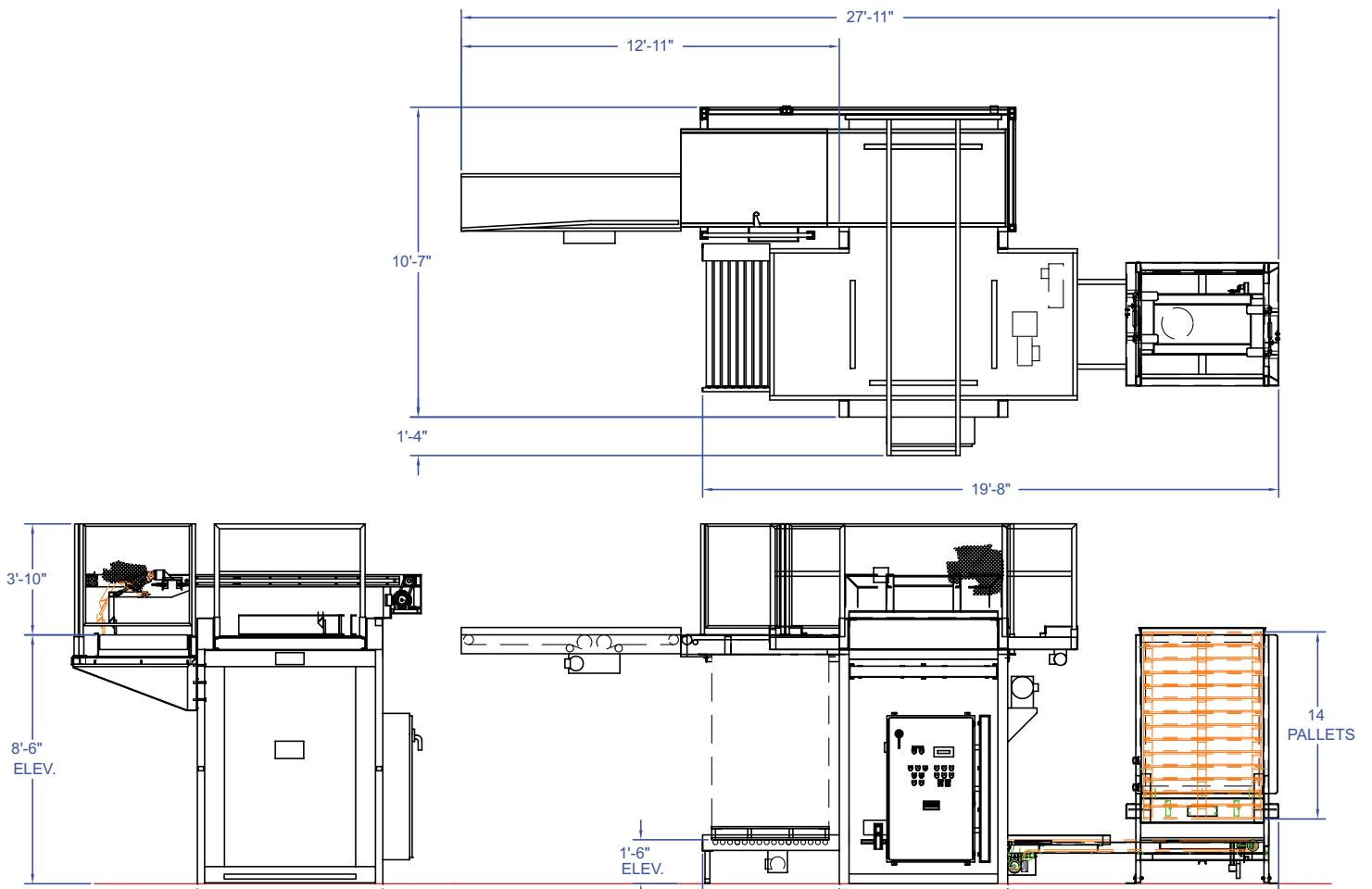
#### Features and Benefits

- Up to 30 bags per minute (based on layer pattern)
- High infeed uses less floor space
- Four-corner, chain-driven pallet suspension system supports the heaviest loads
- Extended vertical sides for pallet dispenser
- Multiple layouts
- Efficient- a single person is needed to load and unload pallets
- Automatic stacking and layer pattern
- Eliminates hand stacking and potential back injuries
- User-friendly operation, simple controls
- Allen-Bradley® Programmable Logic Controller (PLC)
- Remote operator controls
- Simple installation
- 2-year warranty



#### Options

- High capacity intermediate layer forming conveyor
- Extra load size capacities for all three dimensions
- Slip sheet and tie sheet dispenser
- Low level pallet/sheet detectors
- Production counters and program controller
- Electronic controls compatible with your plant standards
- Infeed and discharge conveyor systems
- Butts out rotate device
- Palletless construction



**SPECIFICATIONS**

**Speed**

- Up to 30 bags per minute (based on layer pattern)

**Power Requirements**

- Electrical: 230/460v, 3Ph, 60Hz, 30A
- Pneumatic: 80 psi, 4 SCFM

**Max Load Size**

- 600 lbs. per layer, 4000 lb. load with 70" high pallet



**Sheet Dispenser**



**User-Friendly Operator Controls**



**Pallet Dispenser**