



The Arbot is a pre-engineered robotic palletizing cell that automatically stacks and wraps pallets to exact specifications. It consists of a multi-axis robot, gripper, automatic stretch wrapper, pallet dispenser and conveyance system within a space efficient footprint.

Arbot cells range from a one-line in, one-line out configuration, up to a four-line in, four-line out configuration to match production needs.

Grippers are matched to the application and range from simple suction cups and vacuum plates, to fork and bag style tools. Custom tool designs are also available to accommodate virtually any product.

The system can accommodate cases, trays, bundles, bags, etc. Speeds vary by application; however, rates up to 60 pieces per minute are possible.

An automatic pallet dispenser supplies pallets as needed and can be reloaded while the system is running to maximize efficiency.

Slip sheets and tier sheets can also be placed as needed.

After the load is complete, it is transferred to a fully automatic stretch wrapping station, allowing the robot to immediately begin building the next pallet. Wrapped pallets are then discharged to a staging conveyor for pick-up. For operator safety, a fully interlocked guard system is provided that immediately stops the robot in the event that a perimeter door is opened.

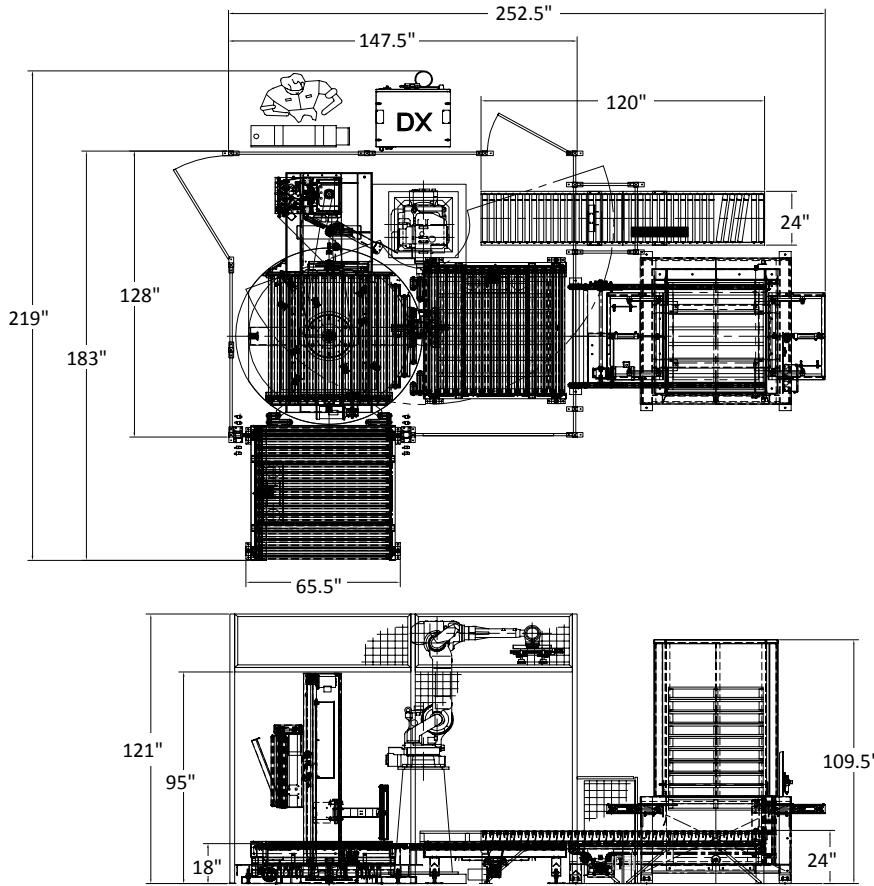
Robotic palletizing systems offer consistent, predictable production; usually at higher rates than their human counterparts. They improve quality and minimize rework and can work 24 hours per day, seven days a week. Additionally, they can handle heavy/ difficult products and prevent injuries.

## BASE UNIT SPECIFICATIONS

- 5-Axis 80kg (176lb) palletizing robot accommodates products up to approximately 100 lbs
- Dedicated robot controller
- A variety of gripper options for all types of packages
- 10' infeed conveyor with pneumatic product separation
- Automatic pallet dispenser, with 10 pallet magazine and drag chain discharge conveyor
- 60" pallet build station conveyor
- Integrated conveyORIZED turntable stretch wrapper (PAC-4R5 up to 45 loads/hour)
- 60" pallet discharge conveyor
- Allen-Bradley® CompactLogix™ PLC
- PanelView™ Plus 1000 - 10 inch color HMI
- Heavy duty construction with powder-coated finish



Note: Final Layout May Vary



**OPTIONS**

- 50 kg, 100 kg, 160 kg, 300 kg, 500 kg or 800 kg 4/5 axis robots
- Vacuum plate, fork style or bag style gripper (custom designs also available)
- Layer sheets – gripper tooling and manually loaded sheet rack
- “Smart” counting style gated infeed conveyor (supports multiple products with no changeover)
- 2 in / 2 out configuration
- 3 in / 3 out configuration
- 4 in / 4 out configuration
- Full-line system integration



Various Conveyor Configurations



Wrapping Station with Optional Corner Board Robot



Pallet Dispenser

**Complete Aftermarket Service & Support for Your Packaging Equipment**

**SUPPORTPRO™**

A DURAVANT SERVICE

Call **844.777.8776** for your regional tech

**24/7 Help Available**



THE DURAVANT FAMILY OF COMPANIES

ARPAC | FISCHBEIN INTERNATIONAL | FMH CONVEYORS | HAMER-FISCHBEIN | KEY TECHNOLOGY | MARLEN INTERNATIONAL | MESPACK | OHLSON | QC INDUSTRIES

[www.duravant.com](http://www.duravant.com)